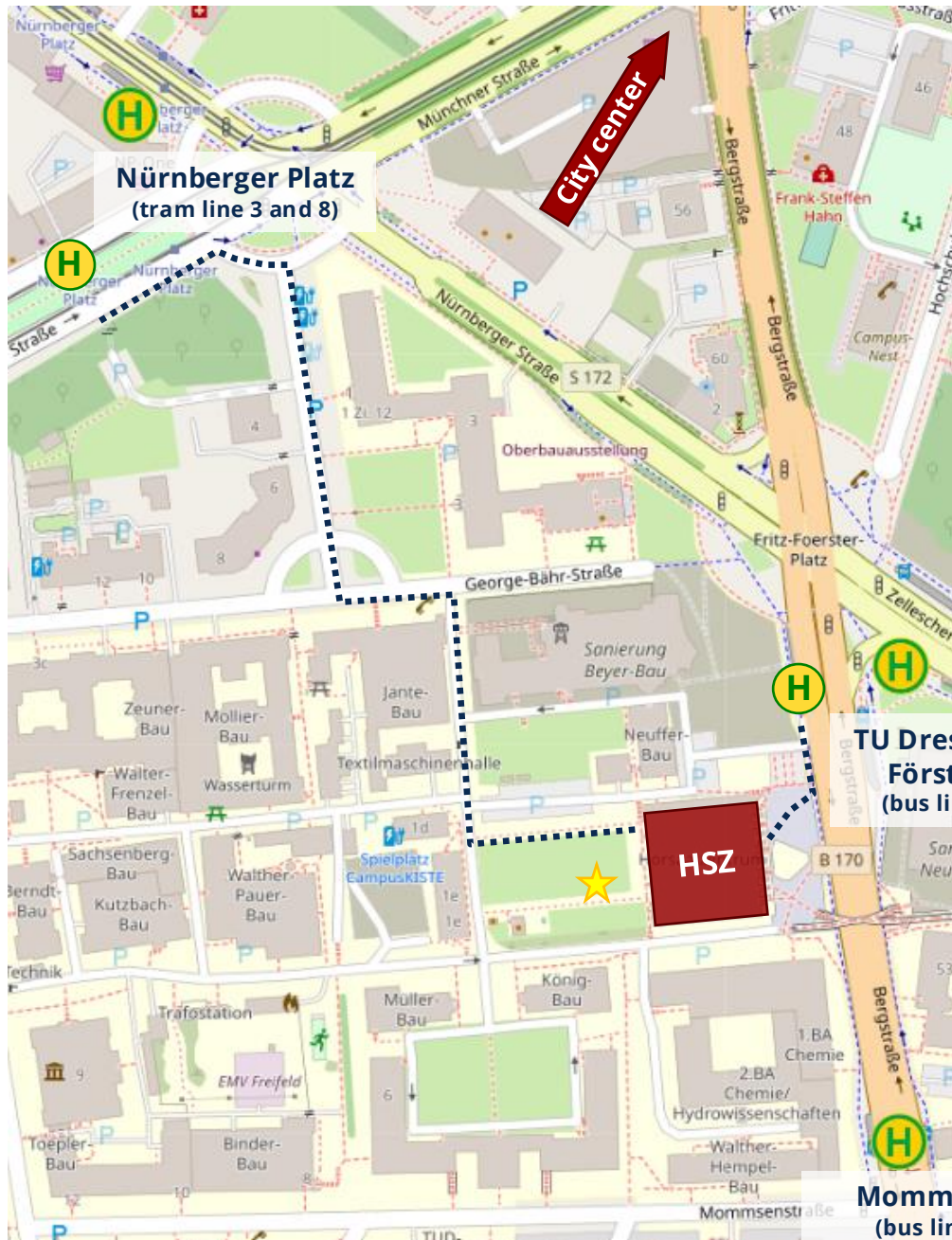


ENERDAY 2026
Venue and floor plan

Directions



Tram/Bus stations



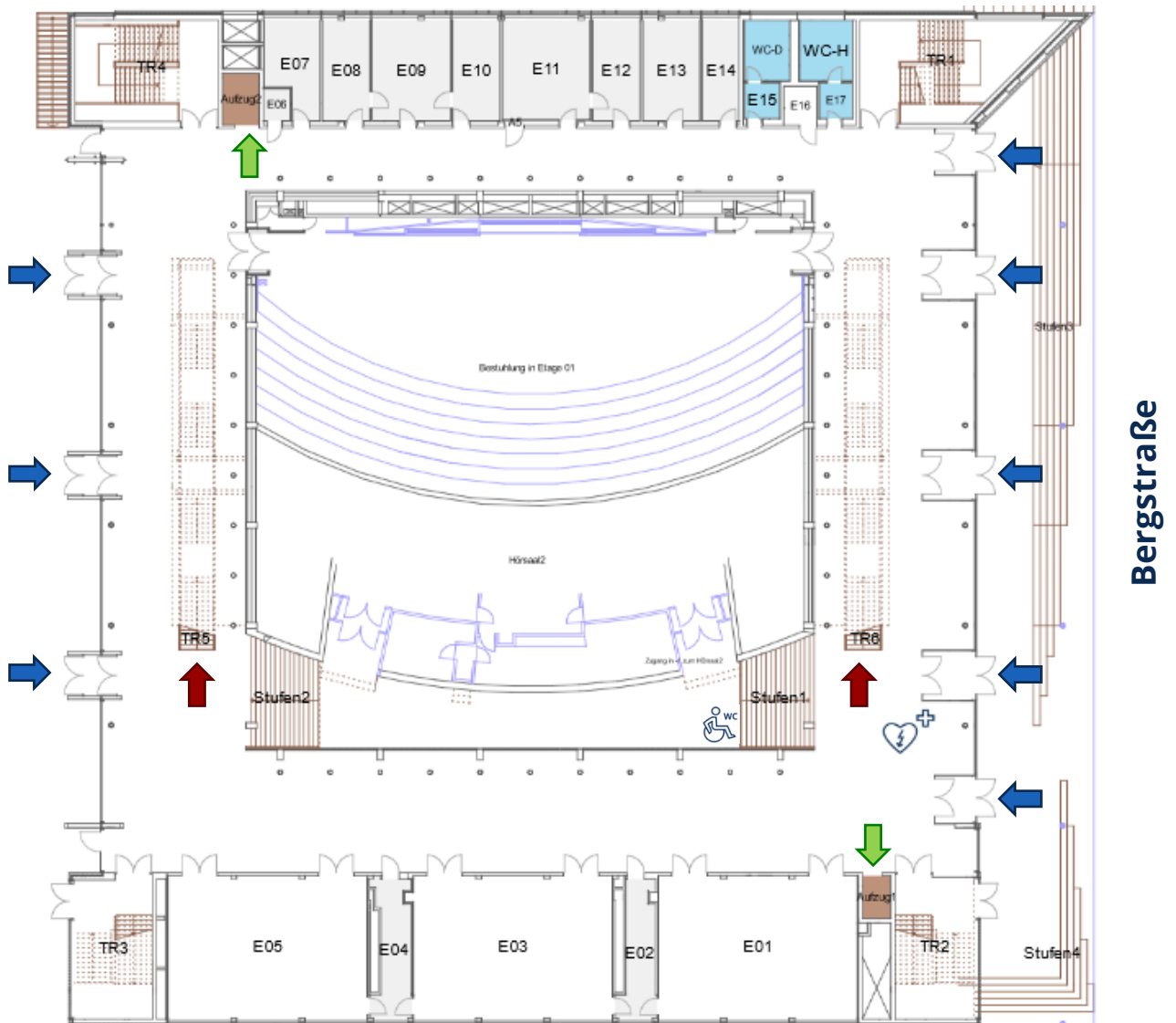
Conference location (HSZ - Hörsaalzentrum)



Location for group picture

ENERDAY 2026
Venue and floor plan

Ground floor (building entry)

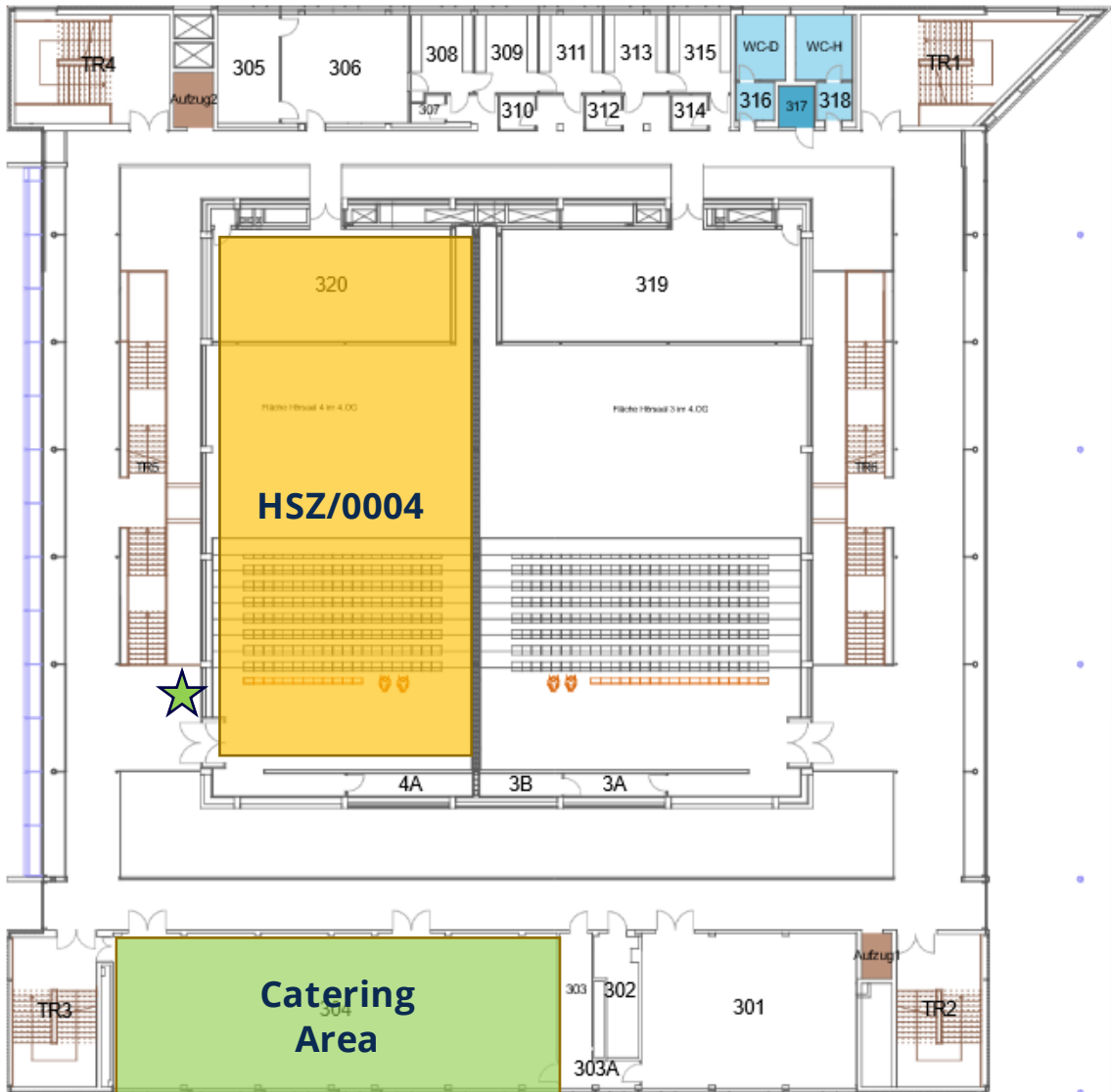


➡ Building entrance

➡ Staircase to reach the conference office at the 3rd floor

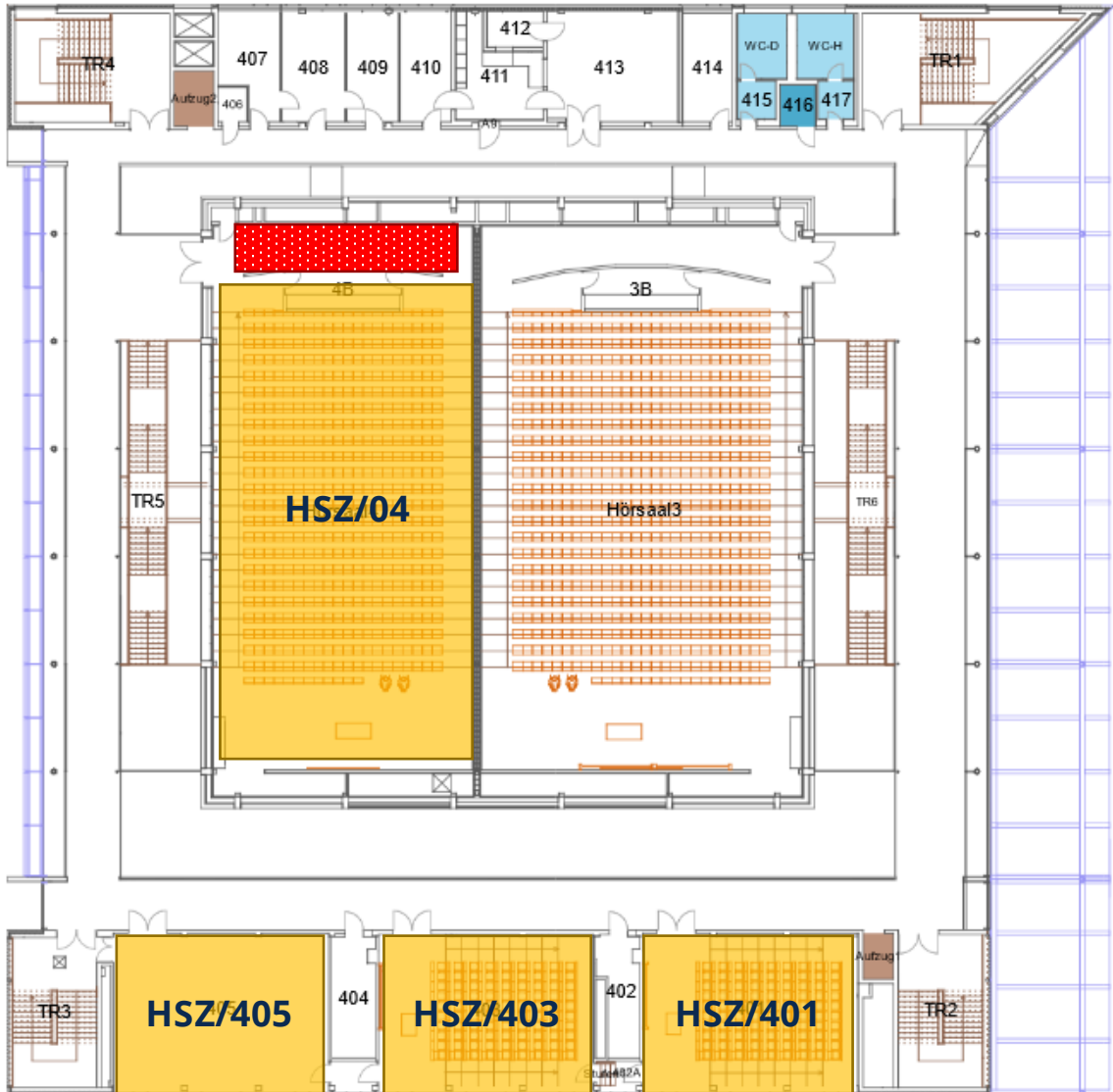
➡ Elevator

ENERDAY 2026
Venue and floor plan
 Conference floor – 3rd floor



-  Conference Rooms
-  Catering Area
-  Conference Office

ENERDAY 2026
Venue and floor plan
 Conference floor – 4th floor



 Conference Rooms

 Wardrobe